

THE WALL OF ORANGE™

BUILT FOR WHAT MATTERS



BRIDGEPORT TRANSITION FITTINGS



CHANGING EVERYTHING.

 **BRIDGEPORT**
BPTFITTINGS.COM



SEE THE DIFFERENCE
ORANGE MAKES™
BPTFITTINGS.COM/TRANSITION

BRIDGEPORT TRANSITION FITTINGS

BRINGING INNOVATION TO THE JOB SITE.



Bridgeport's 5157-DC is a duplex MC to compression 3/4" EMT transition coupling that is ideal for government and school projects requiring the use of compression style fittings.

Fittings that solve problems for contractors.

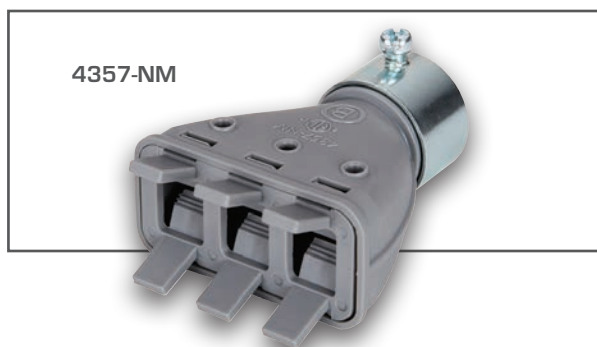
Our extensive line of transition fittings are designed to solve common problems that contractors run into on the job site, like coupling together dissimilar systems. In their broadest application, transition fittings convert two different types of raceway while maintaining the appropriate physical strength and electrical continuity as required by the National Electrical Code.

Bridgeport understands what contractors need to safely and quickly transition between systems with uncompromised code compliance. Our expertly designed, agency listed products allow you to do this faster and easier than ever before.

NEW FROM BRIDGEPORT

Mighty-Merge® 4357-NM

Multi-Port Nonmetallic Cable to EMT Transition Coupling



The 4357-NM transitions multiple nonmetallic cables into 3/4" EMT. Simply squeeze the tabs to install or remove the cables. They're perfect for prefabrication of bundles of nonmetallic cable.

Cable Fill:

One cable per port – 14/2 to 10/3

Two cables per port – 14/2, 12/2, 10/2

Patented.

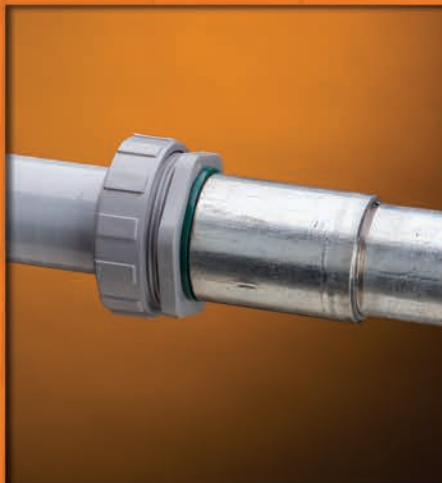
cETLus Listed



FOR MORE INFORMATION, VISIT: WWW.BPTFITTINGS.COM

SEE THE DIFFERENCE ORANGE MAKES™

TRADITIONAL SOLUTION



BRIDGEPORT SOLUTION



4371-LT

Liquid Tight to Rigid Transition Couplings

Used to join metallic to rigid / IMC. Concrete-tight. UL listed "Raintight".

cULus File No. E9391.



Steel

Catalog Number	LT - Rigid Trade Size	Unit Qty.	Std. Pkg. Qty.
4369-LT	3/8" - 1/2"	25	125
4370-LT	1/2" - 1/2"	20	100
4371-LT	3/4" - 3/4"	10	50
4372-LT	1" - 1"	5	25
4373-LT	1 1/4" - 1 1/4"	4	20
4374-LT	1 1/2" - 1 1/2"	3	15
4375-LT	2" - 2"	2	10

TRADITIONAL SOLUTION



BRIDGEPORT SOLUTION



4057-DC

Mighty-Merge® Combination Couplings

Couplings used to join 3/4" EMT to flexible metal conduit and AC/MC/MCI-A Cable. Ensure that the cable is inserted such that the cable armor is visible in the inspection holes. Patented.

cETLus Listed



Zinc Die Cast

Catalog Number	EMT Trade Size	FMC Trade Size	AC/MC Cable Range	Unit Qty.	Std. Pkg. Qty.
4057-DC	3/4"	3/8"	14/2-10/3	25	100
4058-DC	3/4"	1/2"	10/4-6/4 10/3-6/4	25	100

Distributed by:



BRIDGEPORT
BPTFITTINGS.COM

Bridgeport Fittings, Inc.
705 Lordship Blvd.
Stratford, CT 06615-7313

Voice: 203.377.5944

Fax: 203.381.3488

E-mail: sales@bptfittings.com

CONNECT
ONLINE



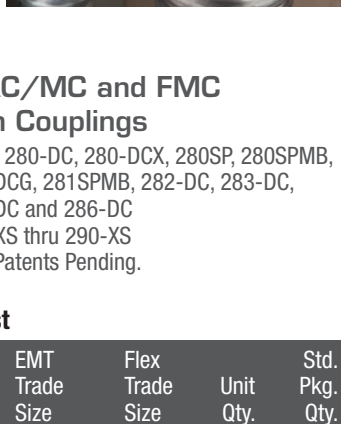
Printed in the U.S.A.
© 2018 Bridgeport Fittings, Inc. All rights reserved.



280-DC



284-DC



287-XS



EMT to AC/MC and FMC Transition Couplings

cULus E9391: 280-DC, 280-DCX, 280SP, 280SPMB, 281-DC, 281-DCG, 281SPMB, 282-DC, 283-DC, 284-DC, 285-DC and 286-DC
cETLus: 287-XS thru 290-XS
Patented and Patents Pending.

Zinc Die Cast

Catalog Number	EMT Trade Size	Flex Trade Size	Unit Qty.	Std. Pkg. Qty.
280SP	1/2"	3/8"	25	100
280SPMB	1/2"	3/8"	25	100
281-DC	1/2"	1/2"	25	250
281-DCG	1/2"	1/2"	25	100
281SPMB	3/4"	3/8"	25	100
282-DC	3/4"	3/4"	25	100
282-DCX	3/4"	1/2"	25	100
283-DC	1"	1"	10	100
284-DC	1 1/4"	1 1/4"	4	40
285-DC	1 1/2"	1 1/2"	2	20
286-DC	2"	2"	2	20



281-DCG

284-DC
285-DC
286-DC



287-XS

Zinc Plated Steel

Catalog Number	EMT/IMC/RIGID Trade Size	Flex Trade Size	Unit Qty.	Std. Pkg. Qty.
287-XS	2 1/2"	2 1/2"	1	4
288-XS	3"	3"	1	4
289-XS	3 1/2"	3 1/2"	1	2
290-XS	4"	4"	---	1



280-DC



280-DCX

Zinc Die Cast

cULus File No. E9391

Catalog Number	EMT Trade Size	Flex Trade Size	Nonmetallic Cable Range Min	Nonmetallic Cable Range Max	AC/MC Cable Range Min	AC/MC Cable Range Max	Unit Qty.	Std. Pkg. Qty.
280-DC	1/2"	---	14/2	10/3	---	---	25	100
280-DCX	1/2"	3/8"(2)	14/2	10/3 or (2) 12/2	14/2 (.43")	10/3 (.61")	25	100

EMT to Rigid Transition Couplings

Set screw type fitting used to join EMT to rigid or IMC. Concrete-tight. Furnished with Tri-Drive slot/Phillips/Robertson head screws.

cETLus: 290-DC thru 292-DC

cULus File No. E9391: 290-S thru 292-S

Zinc Die Cast

Catalog Number	Trade Size	Unit Qty.	Std. Pkg. Qty.
290-DC	1/2"	50	200
291-DC	3/4"	25	100
292-DC	1"	25	100



Zinc

Steel

Catalog Number	Trade Size	Unit Qty.	Std. Pkg. Qty.
290-S	1/2"	25	100
291-S	3/4"	25	100
292-S	1"	10	50

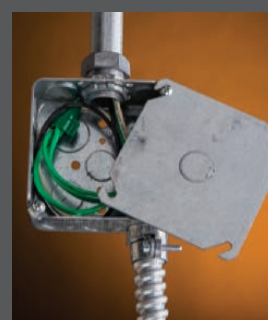


Steel



280SP

TRADITIONAL SOLUTION



BRIDGEPORT SOLUTION



282-DC

TRADITIONAL SOLUTION



BRIDGEPORT SOLUTION



290-DC



280

EMT to FMC Transition Couplings

Compression type for EMT; two-screw steel strap end for flexible metal conduit.

Malleable Iron

Catalog Number	EMT Trade Size	Flex Trade Size	Unit Qty.	Std. Pkg. Qty.
280	1/2"	3/8"	25	100
281	1/2"	1/2"	20	100

Mighty-Merge® Raintight EMT to Rigid Combination Couplings

Used to join rigid to EMT. Coupling internally threaded for rigid / IMC. Compression type for EMT. "Raintight". Patented.

cETLus Listed

Zinc Die Cast

Catalog Number	Trade Size	Unit Qty.	Std. Pkg. Qty.
290-RT	1/2"	25	100
291-RT	3/4"	25	100
292-RT	1"	10	50



290-RT

EMT to Rigid Transition Couplings

Used to join rigid or IMC to EMT. Coupling internally threaded for rigid / IMC. Compression type for EMT. Concrete-tight.

UL File No. E9391: 292-MS

Zinc Plated Steel

Catalog Number	Trade Size	Unit Qty.	Std. Pkg. Qty.
290-MS	1/2"	25	100
291-MS	3/4"	25	100
292-MS	1"	10	50



290-MS

EMT to FMC Transition Couplings

Used to join EMT to flexible metal conduit.

Screw-in end for flex. Compression end for EMT.

UL File No. E9391, also 581-DC UL listed for use with XRWFM.

Zinc Die Cast

Catalog Number	Trade Size	Unit Qty.	Std. Pkg. Qty.
581-DC	1/2"	50	500
582-DC	3/4"	25	250
583-DC	1"	10	100



581-DC



291-S



291-MS



292-RT



292-MS



582-DC

BRIDGEPORT TRANSITION FITTINGS

TRADITIONAL SOLUTIONS



BRIDGEPORT SOLUTION



4157-DC



4156-DC
4157-DC



4357-DC



4457-DC



5157-DC



4357-NM

Mighty-Merge® Multi-Port Transition Couplings

Used to join 14/2 to 10/3 armored or metal clad cable or 3/8" flexible metal conduit to EMT. A labor savings, compared to the traditional junction box installation. Ensure that cables are inserted such that the cable armor is visible in the inspection holes. The 4156 and 4157 are two port designs. The 4357 is a three port design and the 4457 is four port. The 5157 is a two port compression design ideal for government and school construction requiring compression type fittings. The 4357-NM is a three port coupling used to transition multiple nonmetallic cable to 3/4" EMT. Patented and Patents Pending.

cULus File No. E20534: 4157-DC, 5157-DC

cETLus: 4156-DC, 4357-DC, 4457-DC, 4357-NM

Zinc Die Cast

Catalog Number	EMT Trade Size	Flex Trade Size	Unit Qty.	Std. Pkg. Qty.
4156-DC	1/2"	3/8" (2 Port)	20	100
4157-DC	3/4"	3/8" (2 Port)	25	100
4357-DC	1"	3/8" (3 Port)	5	20
4457-DC	1"	3/8" (4 Port)	5	20
5157-DC	3/4"	3/8" (2 Port)	25	100

Nonmetallic

Catalog Number	EMT Trade Size	Nonmetallic Cable Range	Unit Qty.	Std. Pkg. Qty.
4357-NM	3/4"	Connector Cable Fill	10	40

One cable per port: 14/2 to 10/3
Two cables per port: 14/2, 12/2, 10/2



4256-DC



4258-DC

Mighty-Merge Two-to-One Combination Couplings

Used to join two lengths of EMT conduit into one. The 4256-DC joins two 1/2" EMT to one 3/4" EMT. The 4258-DC joins two 3/4" EMT to 1" EMT. Patented.

cULus File No. E24001

Zinc Die Cast

Catalog Number	Trade Size	Unit Qty.	Std. Pkg. Qty.
4256-DC	1/2" - 3/4"	10	40
4258-DC	3/4" - 1"	10	40



4360-DC

Raintight Liquid Tight to EMT Transition Couplings

Used to join either metallic or nonmetallic (Type "B") liquid tight to EMT. Concrete-tight. UL listed "Raintight". Patented.

UL File No. E24001: 4360-DC AND 4361-DC
CSA File No. LR39394: 4360-DC and 4361-DC
cULus File No. E24001: 4362-DC thru 4365-DC

Zinc Die Cast

Catalog Number	Trade Size	Unit Qty.	Std. Pkg. Qty.
4360-DC	1/2"	25	100
4361-DC	3/4"	10	50
4362-DC	1"	10	50
4363-DC	1 1/4"	5	25
4364-DC	1 1/2"	5	25
4365-DC	2"	5	20



4256-DC

TRADITIONAL SOLUTIONS



BRIDGEPORT SOLUTION



4361-DC